



MONTHLY MEMBERSHIP PROGRESS REPORT

District 9 NE

Results as of: 04/30/2019

GMT: OPEN

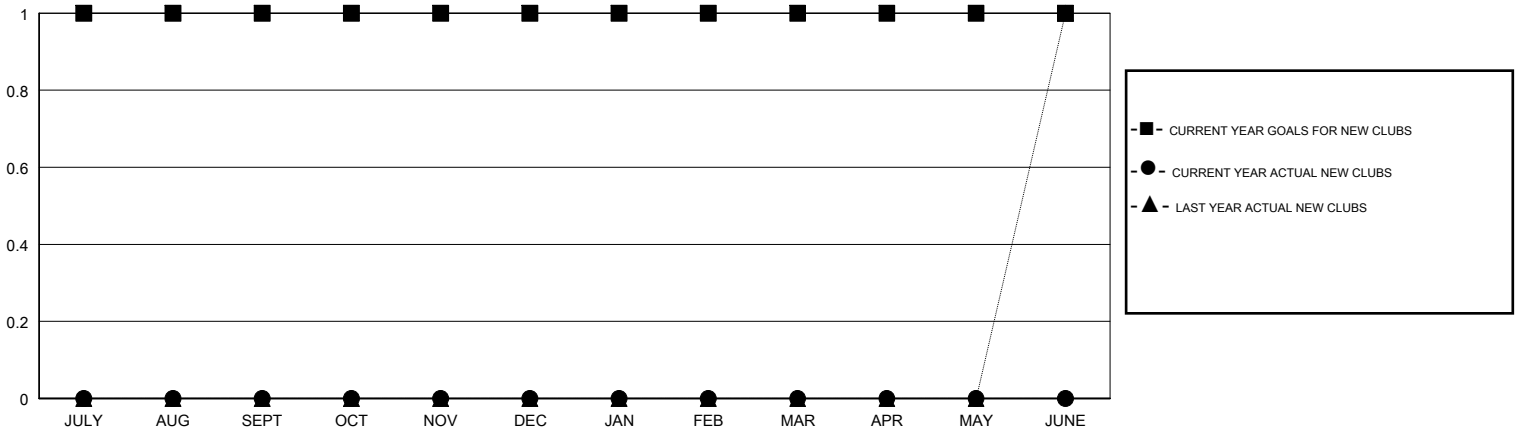
LOCATION IOWA

GMT CA

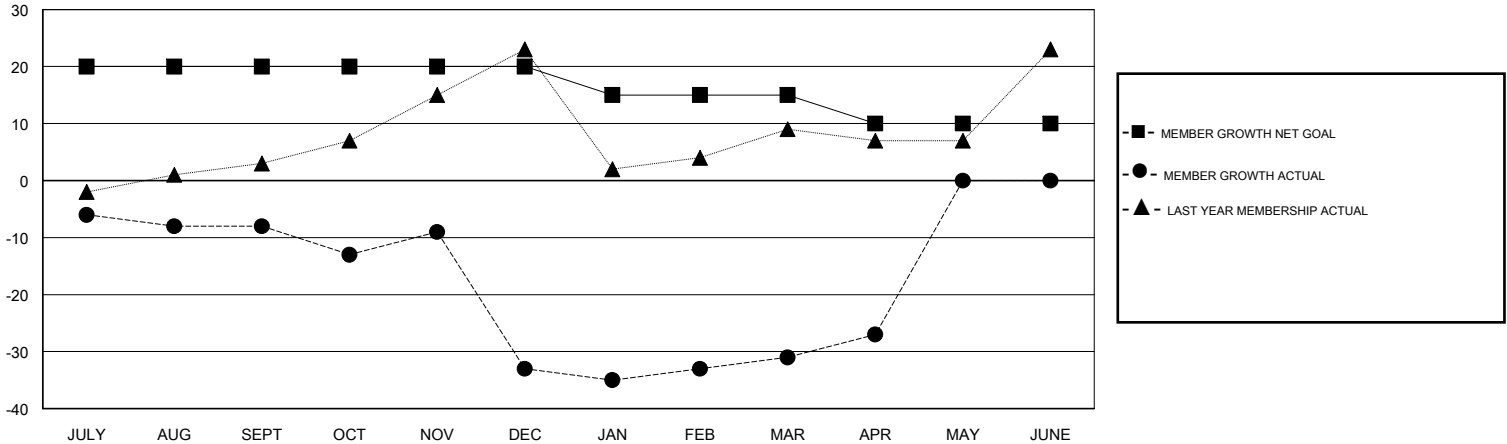
Clubs			
RESULTS FOR 2018-2019			
QUARTER	NEW CLUB GOAL	NEW CLUBS	DROPPED CLUBS
JULY/AUG/SEPT	1	0	0
OCT/NOV/DEC	0	0	1
JAN/FEB/MAR	0	0	0
APR/MAY/JUNE	0	0	0

Members			
RESULTS FOR 2018-2019			
QUARTER	MEMBER GROWTH NET GOAL	MEMBER GROWTH ACTUAL	DROPPED MEMBERS ACTUAL (including transfers)
JULY/AUG/SEPT	20	20	24
OCT/NOV/DEC	0	16	41
JAN/FEB/MAR	-5	25	22
APR/MAY/JUNE	-5	22	18

GOALS AND ACTUAL NEW CLUBS CUMULATIVE



GOALS AND ACTUAL MEMBERS CUMULATIVE



DROPPED CLUBS: 1	26 CLUBS OF 46 ADDED 1 OR MORE NEW MEMBERS	<u>GENDER DISTRIBUTION</u> MALE 1,067 (79.15%) FEMALE 281 (20.85%) Women Percentage Fiscal Year Goal: 25%
<u>DROPPED MEMBERS</u> DECEASED 18 CLUB CANCELLED 15 OTHER 72 TOTAL 105	CLICK HERE FOR CUMULATIVE MEMBERSHIP DATA	TOTAL FAMILY UNIT MEMBERS 148 FAMILY MEMBERS PAYING HALF DUES 75